

# CYLINDERS

FROM  
**2**  
TO  
**1220**  
TONS!

## SUPERIOR FEATURES OF POWER TEAM HYDRAULIC CYLINDERS:

We build our own cylinders in our ISO 9001 registered manufacturing facilities. All Power Team cylinders are date coded and stamped with a maximum pressure rating and capacity. Each cylinder we make complies with the demanding ASME B30.1 standard and are assembled/tested by certified assemblers and pressure tested to 125% of capacity before leaving our factories. Some other key features included:

- Cylinder bores are roller burnished to harden and smooth the surface, improving seal life by 30%.
- Base mounting holes withstand full cylinder capacity.
- Typical cylinder burst pressure range is from 25,000 to 35,000 psi, well-beyond extreme usage.
- Cylinders with gland nuts may be “dead-ended” at 10,000 psi.
- Eddy current and mag-particle inspections detect flaws in the steel.
- Material is removed from surface to ensure that any flaws are eliminated.



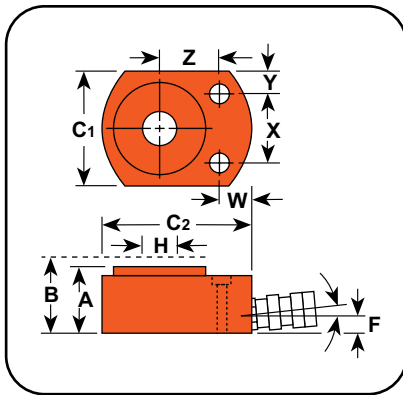
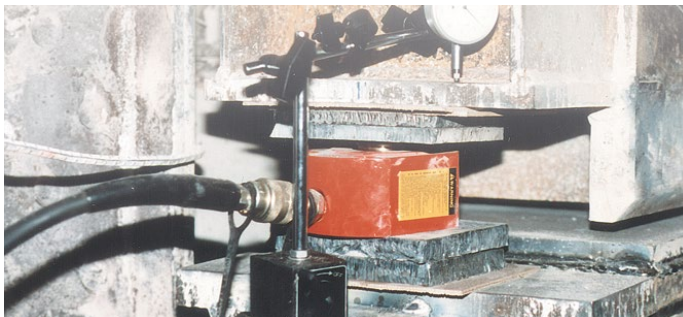
| Page Description | Cylinder Movement              | Type of Return      | Tonnage Range        | Page(s) |
|------------------|--------------------------------|---------------------|----------------------|---------|
| Introduction     | -                              | -                   | -                    | 5-10    |
| C                | Single-Acting                  | Spring              | 5-100                | 11-12   |
| CBT              | Single-Acting                  | Spring              | 5-25                 | 13      |
| RP               | Single-Acting                  | Spring              | 2-5                  | 14      |
| C Accessories    | -                              | -                   | -                    | 5-16    |
| RA               | Single-Acting                  | Spring              | 20-100               | 17      |
| RLS              | Single-Acting                  | Spring              | 5-150                | 18      |
| RSS              | Single-Acting<br>Double-Acting | Spring              | 10-250               | 19-20   |
| RH               | Single-Acting<br>Double-Acting | Spring<br>Hydraulic | 100-100<br>30-200    | 21-22   |
| RT               | Single-Acting                  | Spring              | 17.5-100             | 23-24   |
| RGG              | Single-Acting                  | Load                | 55-600               | 25-28   |
| RDG              | Double-Acting                  | Hydraulic           | 55-600               | 29-32   |
| RD               | Double-Acting                  | Hydraulic           | 10-500               | 33-34   |
| R                | Single-Acting<br>Double-Acting | Spring<br>Hydraulic | 55-565<br>100-565    | 35-36   |
| RC_C<br>RC_D     | Single-Acting<br>Double-Acting | Load<br>Hydraulic   | 740-1220<br>740-1220 | 37-38   |
| RA_L<br>R_L      | Single-Acting,<br>Locking      | Load                | 55-100<br>55-565     | 39-40   |
| RC_P             | Single-Acting,<br>Locking      | Load                | 55-620               | 41      |
| RC_L Series      | Single-Acting,<br>Locking      | Load                | 740-1220             | 42      |

Model Shown:

RLS100



RLS200 used in this lifting application.



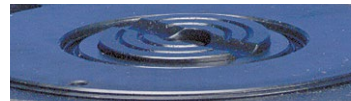
Features

IDEAL LOW CLEARANCE OR TIGHT CONSTRAINT APPLICATIONS REQUIRING HIGH FORCES.

- Low height starting at 1.63" to 4.00".
- Cylinder body, piston and gland nut are "Power-Tech" treated for corrosion and abrasion resistance.
- Standard domed piston rod (5-30 tons) or swivel cap (50-150 tons) minimize effects of off-center loading.
- Unique heavy-duty spring provides fast piston return on all cylinders, except RLS50.
- Coupler is angled upward for extra clearance.
- Complies with ANSI / ASME B30.1 Safety Standards.



RLS1000S (with swivel load cap)



RLS Series ending with an "S" suffix denotes models equipped with a swivel load cap.



Mounting holes for "RLS" cylinders

| RLS Series | Description                                | RLS Series | Description                                |
|------------|--|------------|--|
| RLS50      | 0.34" C'bore x 0.25" deep, 0.22" thru hole | RLS500S    | 0.70" C'bore x 0.50" deep, 0.47" thru hole |
| RLS100     | 0.42" C'bore x 0.34" deep, 0.28" thru hole | RLS750S    | 0.80" C'bore x 0.56" deep, 0.53" thru hole |
| RLS200     | 0.62" C'bore x 0.41" deep, 0.41" thru hole | RLS1000S   | 0.80" C'bore x 0.56" deep, 0.53" thru hole |
| RLS300     | 0.62" C'bore x 0.44" deep, 0.28" thru hole | RLS1500S   | 0.81" C'bore x 0.56" deep, 0.53" thru hole |

Ordering Information

| Cyl. Cap. | Stroke | Order No. | Oil Cap.  | A                | B               | C1           |              | C2              | F                      | H     | W     |       |       |       | Bore Dia. | Cylinder Effective Area | Int. Press. at Cap. | Tons at 10,000 | Prod. Wt. |
|-----------|--------|-----------|-----------|------------------|-----------------|--------------|--------------|-----------------|------------------------|-------|-------|-------|-------|-------|-----------|-------------------------|---------------------|----------------|-----------|
|           |        |           |           | Retracted Height | Extended Height | Outside Dia. | Base to Port | Piston Rod Dia. | Mounting Hole Location |       |       |       |       |       |           |                         |                     |                |           |
| (tons)    | (in.)  |           | (cu. in.) | (in.)            | (in.)           | (in.)        | (in.)        | (in.)           | (in.)                  | (in.) | (in.) | (in.) | (in.) | (in.) | (sq. in.) | (psi)                   | (tons)              | (lbs.)         |           |
| 5         | 0.56   | RLS50     | 0.62      | 1.63             | 2.19            | 1.63         | 2.56         | 0.75            | 0.63                   | 0.75  | 1.13  | 0.25  | 1.00  | 1.13  | 0.994     | 10,061                  | 4.97                | 2.20           |           |
| 10        | 0.44   | RLS100    | 1.00      | 1.75             | 2.19            | 2.19         | 3.25         | 0.63            | 0.75                   | 0.69  | 1.44  | 0.38  | 1.31  | 1.69  | 2.236     | 8,943                   | 11.18               | 3.30           |           |
| 20        | 0.44   | RLS200    | 2.00      | 2.00             | 2.44            | 3.00         | 4.00         | 0.66            | 1.13                   | 0.72  | 1.94  | 0.53  | 1.56  | 2.38  | 4.430     | 9,029                   | 22.15               | 5.60           |           |
| 30        | 0.50   | RLS300    | 3.20      | 2.31             | 2.81            | 3.75         | 4.50         | 0.72            | 1.38                   | 0.81  | 2.06  | 0.84  | 1.75  | 2.88  | 6.492     | 9,242                   | 32.46               | 8.60           |           |
| 50        | 0.63   | RLS500S   | 6.00      | 2.63             | 3.25            | 4.50         | 5.50         | 0.84            | 1.75                   | 0.94  | 2.63  | 0.94  | 2.13  | 3.50  | 9.621     | 10,394                  | 48.10               | 14.00          |           |
| 75        | 0.63   | RLS750S   | 9.90      | 3.13             | 3.75            | 5.53         | 6.50         | 1.00            | 2.13                   | 0.94  | 3.00  | 1.27  | 2.59  | 4.50  | 15.904    | 9,431                   | 79.52               | 23.30          |           |
| 100       | 0.63   | RLS1000S  | 12.30     | 3.38             | 4.00            | 6.00         | 7.00         | 1.00            | 2.50                   | 0.81  | 3.00  | 1.50  | 2.81  | 5.00  | 19.635    | 10,186                  | 98.17               | 30.00          |           |
| 150       | 0.56   | RLS1500S  | 17.20     | 4.00             | 4.56            | 7.50         | 8.50         | 1.31            | 3.00                   | 1.31  | 4.63  | 1.44  | 3.13  | 6.25  | 30.680    | 9,778                   | 153.39              | 52.00          |           |