

Onlypul

Semi-automated hydraulic tube puller for small-scale maintenance

Maus Italia semi-automated hydraulic tube pullers are the result of more than forty years of experience in the field of tube extraction.

Onlypul is designed and built for semi-automated and continuous tube extraction.

It comes in four versions depending on the extraction force (Onlypul 15, Onlypul 30, Onlypul 45 and Onlypul 60)



Semi-automatic

Continuous tube extraction



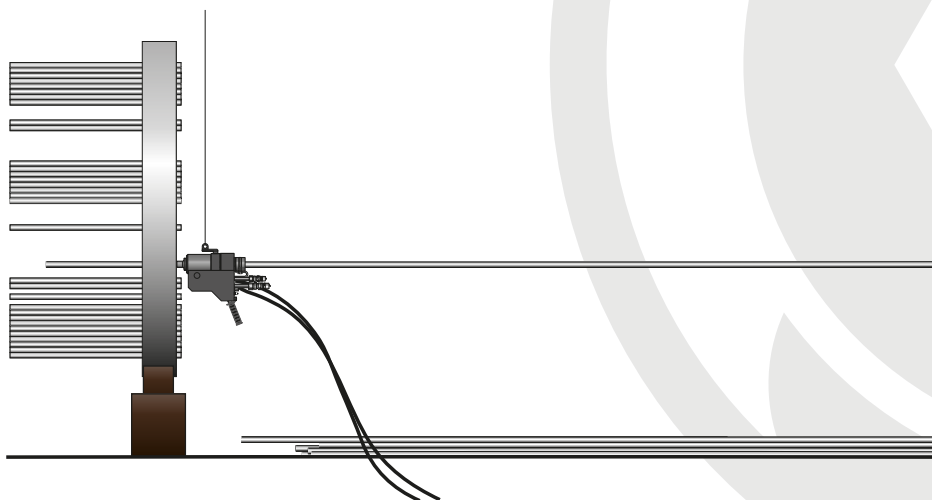
Entry level

For small-scale maintenance operations

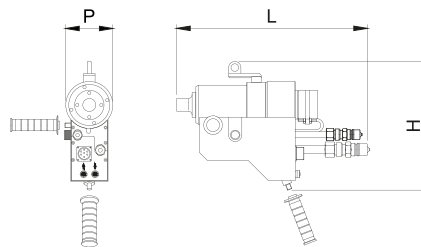


Economico

Full equipment at reduced cost



Electric version



Onlypul 15 EM

- > Tube (*min < de > max*) 9,5 ÷ 28,6 mm - 3/8" ÷ 1.1/8"
- > Maximum extraction force 15000 Kg / 33000 lb
- > Stroke 101,6 mm / 4"
- > Dimensions:
 - Width *L*: 500 mm / 19.7"
 - Depth *P*: 125 mm / 4.9"
 - Height *H*: 340 mm / 13.4"
- > Remote control supply 24 V
- > Weight 21 Kg / 46.2 lb

Onlypul 30 EM

- > Tube (*min < de > max*) 9,5 ÷ 42,4 mm - 3/8" ÷ 1.1/4" GAS
- > Maximum extraction force 30000 Kg / 66000 lb
- > Stroke 101,6 mm / 4"
- > Dimensions:
 - Width *L*: 500 mm / 19.7"
 - Depth *P*: 155 mm / 6.1"
 - Height *H*: 430 mm / 16.9"
- > Remote control supply 24 V
- > Weight 38 Kg / 83.6 lb

Onlypul 45 EM

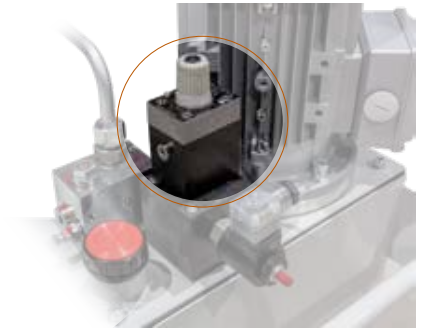
- > Tube (*min < de > max*) 25,4 ÷ 76,2 mm - 1" ÷ 3"
- > Maximum extraction force 45000 Kg / 99000 lb
- > Stroke 50,8 mm / 2"
- > Dimensions:
 - Width *L*: 510 mm / 20.1"
 - Depth *P*: 190 mm / 7.5"
 - Height *H*: 430 mm / 16.9"
- > Remote control supply 24 V
- > Weight 55 Kg / 121.2 lb

Onlypul 60 EM

- > Tube (*min < de > max*) 50,8 ÷ 101,6 mm - 2" ÷ 4"
- > Maximum extraction force 60000 Kg / 132000 lb
- > Stroke 50,8 mm / 2"
- > Dimensions:
 - Width *L*: 510 mm / 20.1"
 - Depth *P*: 220 mm / 8.7"
 - Height *H*: 450 mm / 17.7"
- > Remote control supply 24 V
- > Weight 71 Kg / 156.5 lb

Power unit coupling

The electric version of the Onlypul tube puller is combined with the TP10EVV power unit, though it can also be used in combination with the TP30EPF power unit.



FRAV

Flow Rate Adjustment Valve

The Flow Rate Adjustment Valve is required to regulate the flow of hydraulic oil to ensure the best gripping of the jaw in the tube when using the TP10EVV power unit with **Grippul 11E** and **Grippul 21E**

TP10EVV

Semi-automated hydraulic electric power unit

- > Max pressure: 350 bar/5075 psi
- > Oil flow:

Lt/min (bar)	US/gpm (psi)
12 (0÷70)	3.17 (0÷1015 psi)
0,9 (70÷350)	0.24 (1015÷5075 psi)
- > Hydraulic oil (not included): 30Lt/8 US Gallon - Viscosità 46
- > Supply: 1,1 Kw-230/400V-50/60 Hz-3 phase
- > Remote power control supply: 24V
- > IP: 30
- > Dimensions:

Width: 680 mm / 26.8"
Depth: 500 mm / 19.7"
Height: 720 mm / 28.3"
- > Weight (without hydraulic oil): 86 Kg / 189 lb
- > Crate (power unit + Onlypul transport case)



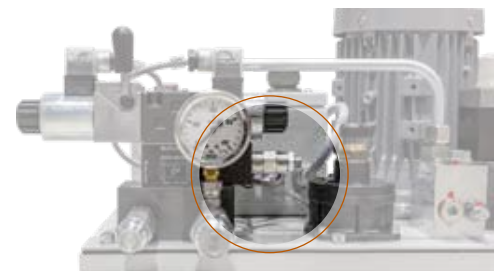
Width:	113 cm / 3.70 ft
Depth:	93 cm / 3.05 ft
Height:	96 cm / 3.15 ft
Weight:	211 Kg / 465 lb



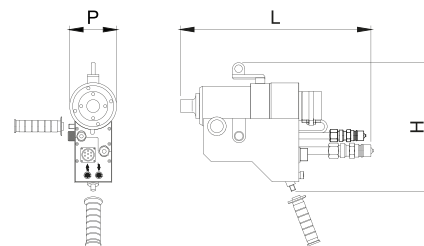
PAV

Pressure Adjustment Valve

The Pressure Adjustment Valve is required to adjust the maximum hydraulic oil pressure when using a TP10EVV power unit with **KATTEX 6E** and **KATTEX 12E** hydraulic tube cutters



Pneumatic version



Onlypul 15 PM

- > Tube (*min* < *de* > *max*) 9,215 ÷ 28,6 mm - 3/8" ÷ 1.1/8"
- > Maximum extraction force 15000 Kg / 33000 lb
- > Stroke 101,6 mm / 4"
- > Dimensions:
 - Width *L*: 500 mm / 19.7"
 - Depth *P*: 125 mm / 4.9"
 - Height *H*: 340 mm / 13.4"
- > Remote control supply 24 V
- > Weight 21 Kg / 46.2 lb

Onlypul 30 PM

- > Tube (*min* < *de* > *max*) 9,5 ÷ 42,4 mm - 3/8" ÷ 1.1/4"
- > Maximum extraction force 30000 Kg / 66000 lb
- > Stroke 101,6 mm / 4"
- > Dimensions:
 - Width *L*: 500 mm / 19.7"
 - Depth *P*: 155 mm / 6.1"
 - Height *H*: 430 mm / 16.9"
- > Remote control supply 24 V
- > Weight 38 Kg / 83.6 lb

Onlypul 45 PM

- > Tube (*min* < *de* > *max*) 25,4 ÷ 76,2 mm - 1" ÷ 3"
- > Maximum extraction force 45000 Kg / 99000 lb
- > Stroke 50,8 mm / 2"
- > Dimensions:
 - Width *L*: 510 mm / 20.1"
 - Depth *P*: 190 mm / 7.5"
 - Height *H*: 430 mm / 16.9"
- > Remote control supply 24 V
- > Weight 55 Kg / 121.2 lb

Onlypul 60 PM

- > Tube (*min* < *de* > *max*) 50,8 ÷ 101,6 mm - 2" ÷ 4"
- > Maximum extraction force 60000 Kg / 132000 lb
- > Stroke 50,8 mm / 2"
- > Dimensions:
 - Width *L*: 510 mm / 20.1"
 - Depth *P*: 220 mm / 8.7"
 - Height *H*: 450 mm / 17.7"
- > Remote control supply 24 V
- > Weight 71 Kg / 156.5 lb

Power unit coupling

The electric version of the Onlypul tube puller is combined with the TP10EVV power unit, though it can also be used in combination with the TP30EPF power unit.



Flow Rate Adjustment Valve

The Flow Rate Adjustment Valve is required to regulate the flow of hydraulic oil to ensure the best gripping of the jaw in the tube when using the TP10PVV power unit with **Grippul 11P** and **Grippul 21P**

TP10PVV

Semi-automatic hydraulic pneumatic power unit

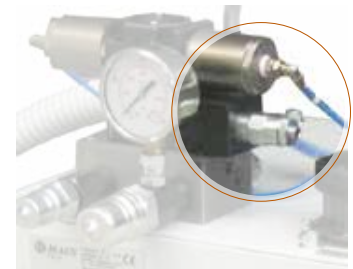
- > Max pressure: 350 bar / 5075 psi
- > Oil flow:

Lt/min (bar)	US/gpm (psi)
12 (0÷70)	3.17 (0÷1015 psi)
0,9 (70÷350)	0,24 (1015÷5075 psi)
- > Hydraulic oil (not included): 30Lt/8 US Gallon - Viscosità 46
- > Motor power: 1,7 Kw - 7 bar (100 psi)
- > Air consumption: 1900 Lt/min (67 Cfm) - 7 bar / 100 psi
- > Dimensions:

Width: 680 mm / 26.8"
Depth: 500 mm / 19.7"
Height: 600 mm / 23.6"
- > Weight (without hydraulic oil): 67,5 Kg / 149 lb
- > Crate (power unit + Onlypul transport case)



Width:	113 cm / 3.70 ft
Depth:	93 cm / 3.05 ft
Height:	96 cm / 3.15 ft
Weight:	192 Kg / 423 lb



Pressure Adjustment Valve

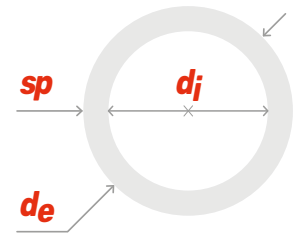
The Pressure Adjustment Valve is required to adjust the maximum hydraulic oil pressure when using a TP10PVV power unit with **KATTEX 6P** and **KATTEX 12P** hydraulic tube cutters



TPM

Extraction mandrel for tubes from 3/8" (9,5mm) to 2.1/2" (63,5mm)

Tube features				Mandrel <input checked="" type="checkbox"/>	
d_e		sp	d_i		
inches	mm	B.W.G	mm	inches	Cod. In.
3/8" (9,5)	17 ÷ 19	6,5 ÷ 7,5	0.256 ÷ 0.295	TPM-7	5/16"
	20 ÷ 24	7,5 ÷ 8,5	0.295 ÷ 0.335	TPM-8	
1/2" (12,7)	14 ÷ 16	8,5 ÷ 9,5	0.335 ÷ 0.374	TPM-9	3/8"
	17 ÷ 18	9,5 ÷ 10,5	0.374 ÷ 0.413	TPM-10	
	19 ÷ 21	10,5 ÷ 11,5	0.413 ÷ 0.453	TPM-11	
	24	11,5 ÷ 12,5	0.453 ÷ 0.492	TPM-12	
5/8" (15,9)	12 ÷ 13	10,3 ÷ 11,1	0.407 ÷ 0.435	TPM-11A	1/2"
	14 ÷ 15	11,7 ÷ 12,2	0.459 ÷ 0.481	TPM-12A	
	16 ÷ 17	12,5 ÷ 13,5	0.492 ÷ 0.531	TPM-13A	
	19 ÷ 21	13,5 ÷ 14,5	0.531 ÷ 0.571	TPM-14A	
	23 ÷ 24	14,5 ÷ 15,5	0.571 ÷ 0.610	TPM-15A	
3/4" (19,0)	11	12,5 ÷ 13,5	0.492 ÷ 0.531	TPM-13	5/8"
	12 ÷ 13	13,5 ÷ 14,5	0.531 ÷ 0.571	TPM-14	
	14 ÷ 15	14,5 ÷ 15,5	0.571 ÷ 0.610	TPM-15	
	16 ÷ 17	15,5 ÷ 16,5	0.610 ÷ 0.650	TPM-16	
	18 ÷ 20	16,5 ÷ 17,5	0.650 ÷ 0.689	TPM-17	
	21 ÷ 24	17,5 ÷ 18,5	0.689 ÷ 0.728	TPM-18	
7/8" (22,2)	14	17,5 ÷ 18,5	0.689 ÷ 0.728	TPM-18S	5/8"
	16 ÷ 17	18,5 ÷ 19,5	0.728 ÷ 0.768	TPM-19S	
	18 ÷ 19	19,5 ÷ 20,5	0.768 ÷ 0.807	TPM-20S	
1" (25,4)	10 ÷ 11	18,5 ÷ 19,5	0.728 ÷ 0.768	TPM-19	3/4"
	12	19,5 ÷ 20,5	0.768 ÷ 0.807	TPM-20	
	13 ÷ 14	20,5 ÷ 21,5	0.807 ÷ 0.846	TPM-21	
	15 ÷ 16	21,5 ÷ 22,5	0.846 ÷ 0.886	TPM-22	
	18	22,5 ÷ 23,5	0.886 ÷ 0.925	TPM-23	
	19 ÷ 20	23,5 ÷ 24,5	0.925 ÷ 0.965	TPM-24	
3/4" Gas(26,9)	13	21,5 ÷ 22,5	0.846 ÷ 0.886	TPM-22G	3/4"
	14 ÷ 15	22,5 ÷ 23,5	0.886 ÷ 0.925	TPM-23G	
	16 ÷ 17	23,5 ÷ 24,5	0.925 ÷ 0.965	TPM-24G	
1.1/4" (31,8)	19 ÷ 21	24,5 ÷ 25,4	0.956 ÷ 1.004	TPM-25G	1"
	10	24,5 ÷ 25,4	0.956 ÷ 1.004	TPM-25	
	11 ÷ 12	25,5 ÷ 26,5	1.004 ÷ 1.043	TPM-26	
	13	26,5 ÷ 27,5	1.043 ÷ 1.083	TPM-27	
	14 ÷ 15	27,5 ÷ 28,5	1.083 ÷ 1.112	TPM-28	
	16 ÷ 18	28,5 ÷ 29,5	1.112 ÷ 1.161	TPM-29	
	19 ÷ 22	29,5 ÷ 30,5	1.161 ÷ 1.201	TPM-30	
1" Gas (33,7)	23 ÷ 24	30,5 ÷ 31,5	1.201 ÷ 1.240	TPM-31	1"
	9	25,5 ÷ 26,5	1.004 ÷ 1.043	TPM-26G	
	10	26,5 ÷ 27,5	1.043 ÷ 1.063	TPM-27G	
	11	27,5 ÷ 28,5	1.083 ÷ 1.122	TPM-28G	
	13 ÷ 14	28,5 ÷ 29,5	1.122 ÷ 1.161	TPM-29G	



Dimensions fit for

Onlypul 15

Dimensions fit for

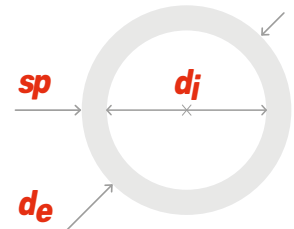
Onlypul 30

Dimensions fit for

Onlypul 45



Tube features				Mandrel <input type="checkbox"/>	
d_e		sp	d_j		
inches	mm	B.W.G	mm	inches	Cod. In.
1.1/2" (38,1)	10 ÷ 11	31,5 ÷ 32,5	1.240 ÷ 1.280	TPM-32	3/8"
	12 ÷ 13	32,5 ÷ 33,5	1.280 ÷ 1.319	TPM-33	
	14	33,5 ÷ 34,5	1.319 ÷ 1.358	TPM-34	
	15 ÷ 17	34,5 ÷ 35,5	1.358 ÷ 1.398	TPM-35	
	18 ÷ 20	35,5 ÷ 36,5	1.398 ÷ 1.437	TPM-36	
	21 ÷ 24	36,5 ÷ 37,5	1.437 ÷ 1.280	TPM-37	
1.1/4" Gas (42,4)	12	36,5 ÷ 37,5	1.437 ÷ 1.476	TPM-37G	1"
	15 ÷ 16	37,5 ÷ 38,5	1.476 ÷ 1.516	TPM-38G	
	14 ÷ 16	38,5 ÷ 39,5	1.516 ÷ 1.555	TPM-39G	
	17 ÷ 19	39,5 ÷ 40,5	1.555 ÷ 1.594	TPM-40G	
	20 ÷ 24	40,5 ÷ 41,5	1.594 ÷ 1.634	TPM-41G	
1.3/4" (44,4)	10 ÷ 11	37,5 ÷ 38,5	1.476 ÷ 1.516	TPM-38/44	1"
	12	38,5 ÷ 39,5	1.516 ÷ 1.555	TPM-39/44	
	13 ÷ 14	39,5 ÷ 40,5	1.555 ÷ 1.594	TPM-40/44	
	15 ÷ 16	40,5 ÷ 41,5	1.594 ÷ 1.634	TPM-41/44	
	18 ÷ 19	41,5 ÷ 42,5	1.634 ÷ 1.673	TPM-42/44	
	20 ÷ 24	42,5 ÷ 43,5	1.673 ÷ 1.713	TPM-43/44	
1.1/2" Gas (48,3)	11 ÷ 12	42,5 ÷ 43,5	1.673 ÷ 1.713	TPM-43G	1"
	13 ÷ 14	43,5 ÷ 44,5	1.713 ÷ 1.752	TPM-44G	
	15 ÷ 17	44,5 ÷ 45,5	1.752 ÷ 1.791	TPM-45G	
	18 ÷ 19	45,5 ÷ 43,5	1.791 ÷ 1.831	TPM-46G	
2" (50,8)	10	43,5 ÷ 44,5	1.713 ÷ 1.752	TPM-44/51	1"
	11 ÷ 17	44,5 ÷ 45,5	1.752 ÷ 1.791	TPM-45/51	
	13	45,5 ÷ 46,5	1.791 ÷ 1.831	TPM-46/51	
	14 ÷ 15	46,5 ÷ 47,5	1.831 ÷ 1.870	TPM-47/51	
	16 ÷ 18	47,5 ÷ 48,5	1.870 ÷ 1.909	TPM-48/51	
	19 ÷ 22	48,5 ÷ 21,5	1.909 ÷ 1.949	TPM-49/51	
2.1/4" (57,1)	9 ÷ 10	49,5 ÷ 50,5	1.949 ÷ 1.985	TPM-50/57	1.1/2"
	11	50,5 ÷ 51,5	1.985 ÷ 1.476	TPM-51/57	
	12 ÷ 13	51,5 ÷ 52,5	2.028 ÷ 2.067	TPM-52/57	
2" Gas (60,3)	7	50,5 ÷ 51,5	1.999 ÷ 2.029	TPM-51G	1.1/2"
	8	51,5 ÷ 52,5	2.028 ÷ 2.057	TPM-52G	
	9	52,5 ÷ 53,5	2.067 ÷ 2.105	TPM-53G	
2.1/2" (63,5)	7	53,5 ÷ 54,4	2.105 ÷ 2.145	TPM-54/63	1.1/2"
	8	54,5 ÷ 55,4	2.145 ÷ 2.185	TPM-55/63	
	9	55,5 ÷ 56,5	2.185 ÷ 2.224	TPM-56/63	
	10	56,5 ÷ 57,5	2.224 ÷ 2.264	TPM-57/63	



Dimensions fit for
Onlypul 30

Dimensions fit for
Onlypul 45

Dimensions fit for
Onlypul 60

Jaw TPJ



de	Onlypul 15	Onlypul 30	Onlypul 45	Onlypul 60
inches	Cod.	Cod.	Cod.	Cod.
3/8"	TPJ/15-1	TPJ/30-1	-	-
1/2"	TPJ/15-2	TPJ/30-2	-	-
5/8"	TPJ/15-3	TPJ/30-3	-	-
3/4"	TPJ/15-4	TPJ/30-4	-	-
7/8"	TPJ/15-4/A	TPJ/30-4/A	-	-
1"	TPJ/15-5	TPJ/30-5	TPJ/45-5	-
3/4" Gas	-	TPJ/30-6	TPJ/45-6	-
1.1/4"	-	TPJ/30-7	TPJ/45-7	-
1" Gas	-	TPJ/30-8	TPJ/45-8	-
1.1/2"	-	TPJ/30-9	TPJ/45-9	-
1.1/4" Gas	-	TPJ/30-10	TPJ/45-10	-
1.3/4"	-	-	TPJ/45-11	-
1.1/2" Gas	-	-	TPJ/45-12	-
2"	-	-	TPJ/45-13	TPJ/60-13
2.1/4"	-	-	TPJ/45-14	TPJ/60-14
2" Gas	-	-	TPJ/45-15	TPJ/60-15
2.1/2"	-	-	TPJ/45-16	TPJ/60-16
3"	-	-	TPJ/45-17	TPJ/60-17
3.1/2"	-	-	-	TPJ/60-18
4"	-	-	-	TPJ/60-19

TPC Collars



de	Onlypul 15	Onlypul 30	Onlypul 45	Onlypul 60
inches	Cod.	Cod.	Cod.	Cod.
3/8"	TPC-11	TPC-11	-	-
1/2"	TPC-14	TPC-14	-	-
5/8"	TPC-18	TPC-18	-	-
3/4"	TPC-21	TPC-21	-	-
7/8"	TPC-25	TPC-25	-	-
1"	TPC-28	TPC-28	TPC-28	-
3/4" Gas	-	TPC-31	TPC-31	-
1.1/4"	-	TPC-34	TPC-34	-
1" Gas	-	TPC-37	TPC-37	-
1.1/2"	-	TPC-41	TPC-41	-
1.1/4" Gas	-	TPC-44	TPC-44	-
1.3/4"	-	-	TPC/45-48	-
1.1/2" Gas	-	-	TPC/45-53	-
2"	-	-	TPC/45-56	TPC/60-56
2.1/4"	-	-	TPC/45-60	TPC/60-60
2" Gas	-	-	TPC/45-63	TPC/60-63
2.1/2"	-	-	TPC/45-66	TPC/60-66
3"	-	-	TPC/45-80	TPC/60-80
3.1/2"	-	-	-	TPC/60-93
4"	-	-	-	TPC/60-105

TPM-K

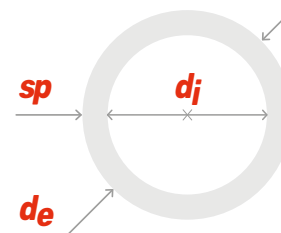


Quick gripping extraction mandrel for tubes from 38,1 mm (1.1/2") to 101,6 mm (4").

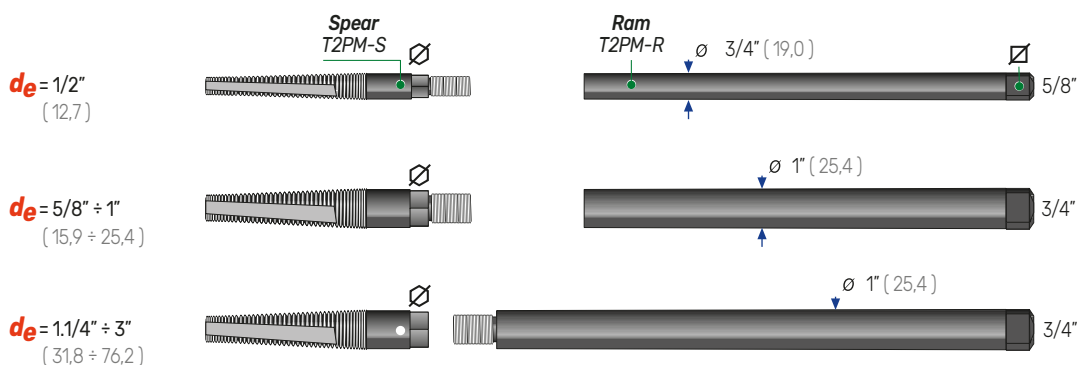
An exclusive Maus Italia-designed extraction spear: used in combination with the Runpul puller allows for a rapid tube extraction without the need for tightening with a screwer (no screwer or specific keys required).

Tube				Mandrel	Cone	Jaw	Extension		
<i>d_e</i>	<i>sp</i>	<i>d_j</i>							
inches	mm	B.W.G	mm	inches	Cod.	Inches/mm	Cod.	Cod.	Cod.
1.1/2" (38,1)	10 ÷ 11		31,5 ÷ 32,5	1.240 ÷ 1.280	TPM-K-32	CK-32÷37	JK-32	RK-32÷37	1.1/4"
	12 ÷ 13		32,5 ÷ 33,5	1.280 ÷ 1.319	TPM-K-33		JK-33		
	14		33,5 ÷ 34,5	1.319 ÷ 1.358	TPM-K-34		JK-34		
	15 ÷ 17		34,5 ÷ 35,5	1.358 ÷ 1.397	TPM-K-35		JK-35		
	18 ÷ 20		35,5 ÷ 36,5	1.397 ÷ 1.437	TPM-K-36		JK-36		
1.3/4" (44,4)	10 ÷ 11		37,5 ÷ 38,5	1.476 ÷ 1.516	TPM-K-38	CK-38÷43	JK-38	RK-38÷43	1.1/4"
	12		38,5 ÷ 39,5	1.516 ÷ 1.555	TPM-K-39		JK-39		
	13 ÷ 14		39,5 ÷ 40,5	1.555 ÷ 1.594	TPM-K-40		JK-40		
	15 ÷ 16		40,5 ÷ 41,5	1.594 ÷ 1.673	TPM-K-41		JK-41		
	18 ÷ 19		41,5 ÷ 42,5	1.634 ÷ 1.673	TPM-K-42		JK-42		
2" (50,8)	20 ÷ 24		42,5 ÷ 43,5	1.673 ÷ 1.713	TPM-K-43	CK-44÷49	JK-43	RK-44÷49	1.1/4"
	10		43,5 ÷ 44,5	1.713 ÷ 1.752	TPM-K-44		JK-44		
	11 ÷ 12		44,5 ÷ 45,5	1.752 ÷ 1.791	TPM-K-45		JK-45		
	13		45,5 ÷ 46,5	1.791 ÷ 1.831	TPM-K-46		JK-46		
	14 ÷ 15		46,5 ÷ 47,5	1.831 ÷ 1.870	TPM-K-47		JK-47		
2.1/4" (57,1)	16 ÷ 18		47,5 ÷ 48,5	1.870 ÷ 1.909	TPM-K-48	CK-50÷52	JK-48	RK-50÷52	1.1/2"
	19 ÷ 22		48,5 ÷ 49,5	1.909 ÷ 1.949	TPM-K-49		JK-49		
	9 ÷ 10		49,5 ÷ 50,5	1.949 ÷ 1.988	TPM-K-50		JK-50		
2.1/2" (63,5)	11		50,5 ÷ 51,5	1.988 ÷ 2.028	TPM-K-51	CK-54÷57	JK-51	RK-54÷57	1.1/2"
	12 ÷ 13		51,5 ÷ 52,5	2.028 ÷ 2.067	TPM-K-52		JK-52		
	7		53,5 ÷ 54,5	2.106 ÷ 2.146	TPM-K-54		JK-54		
3" (76,2)	8		54,5 ÷ 55,5	2.146 ÷ 2.185	TPM-K-55	CK-67÷70	JK-55	RK-67÷70	1.3/4"
	9		55,5 ÷ 56,5	2.185 ÷ 2.224	TPM-K-56		JK-56		
	10		56,5 ÷ 57,5	2.224 ÷ 2.264	TPM-K-57		JK-57		
	7		66,5 ÷ 67,5	2.618 ÷ 2.667	TPM-K-67		JK-67		
	8		67,5 ÷ 68,5	2.657 ÷ 2.697	TPM-K-68		JK-68		
3.1/2" (88,9)	9 ÷ 10		68,5 ÷ 69,5	2.697 ÷ 2.736	TPM-K-69	CK-79÷82	JK-69	RK-79÷82	1.3/4"
	11		69,5 ÷ 70,5	2.736 ÷ 2.776	TPM-K-70		JK-70		
	6		78,5 ÷ 79,5	3.091 ÷ 3.130	TPM-K-79		JK-79		
	7		79,5 ÷ 80,5	3.130 ÷ 3.169	TPM-K-80		JK-80		
	8 ÷ 9		80,5 ÷ 81,5	3.169 ÷ 3.209	TPM-K-81		JK-81		
4" (101,6)	10		81,5 ÷ 82,5	3.209 ÷ 3.248	TPM-K-82	CK-92÷95	JK-82	RK-92÷95	1.3/4"
	6		91,5 ÷ 92,5	3.602 ÷ 3.642	TPM-K-92		JK-92		
	7 ÷ 8		92,5 ÷ 93,5	3.642 ÷ 3.681	TPM-K-93		JK-93		
	9		93,5 ÷ 94,5	3.681 ÷ 3.720	TPM-K-94		JK-94		
	10		94,5 ÷ 95,5	3.720 ÷ 3.760	TPM-K-95		JK-95		

T2PM



Tube features				Mandrel	Extension	Jaw	Cone	
d_e		sp	d_{im}					
inches	mm	B.W.G	mm	inches	Cod.	Inches mm	Cod.	Cod.
1/2" (12.7)	14 ÷ 16	8,5 ÷ 9,5	0.335 ÷ 0.374	T2PM-S9	17 0.669	T2PM-R9÷12	TPJ/15-4 TPJ/30-4	TPC/21
	17 ÷ 18	9,5 ÷ 10,5	0.374 ÷ 0.413	T2PM-S10				
	19 ÷ 21	10,5 ÷ 11,5	0.413 ÷ 0.453	T2PM-S11				
	24	11,5 ÷ 12,5	0.453 ÷ 0.492	T2PM-S12				
5/8" (15.9)	16 ÷ 17	12,5 ÷ 13,5	0.492 ÷ 0.531	T2PM-S13	22 0.866	T2PM-R13÷24	TPJ/15-5 TPJ/30-5	TPC/28
	19 ÷ 21	13,5 ÷ 14,5	0.531 ÷ 0.571	T2PM-S14				
	23 ÷ 24	14,5 ÷ 13,5	0.571 ÷ 0.610	T2PM-S15				
3/4" (19.0)	11	12,5 ÷ 14,5	0.492 ÷ 0.531	T2PM-S13	22 0.866	T2PM-R13÷24	TPJ/15-5 TPJ/30-5	TPC/28
	12 ÷ 13	13,5 ÷ 15,5	0.531 ÷ 0.571	T2PM-S14				
	14 ÷ 15	14,5 ÷ 13,5	0.571 ÷ 0.610	T2PM-S15				
	16 ÷ 17	15,5 ÷ 14,5	0.610 ÷ 0.650	T2PM-S16				
	18 ÷ 20	16,5 ÷ 15,5	0.650 ÷ 0.689	T2PM-S17				
	21 ÷ 24	17,5 ÷ 18,5	0.689 ÷ 0.728	T2PM-S18				
7/8" (22.2)	14	17,5 ÷ 18,5	0.689 ÷ 0.728	T2PM-S18	22 0.866	T2PM-R13÷24	TPJ/15-5 TPJ/30-5	TPC/28
	16 ÷ 17	18,5 ÷ 19,5	0.728 ÷ 0.768	T2PM-S19				
	18 ÷ 19	19,5 ÷ 20,5	0.768 ÷ 0.807	T2PM-S20				
1" (25.4)	10 ÷ 11	18,5 ÷ 19,5	0.728 ÷ 0.768	T2PM-S19	22 0.866	T2PM-R13÷24	TPJ/15-5 TPJ/30-5	TPC/28
	12	19,5 ÷ 20,5	0.768 ÷ 0.807	T2PM-S20				
	13 ÷ 14	20,5 ÷ 21,5	0.807 ÷ 0.846	T2PM-S21				
	15 ÷ 16	21,5 ÷ 22,5	0.846 ÷ 0.886	T2PM-S22				
	18	22,5 ÷ 23,5	0.886 ÷ 0.925	T2PM-S23				
	19 ÷ 20	23,5 ÷ 24,5	0.925 ÷ 0.965	T2PM-S24				



Tube features				Mandrel	Extension	Jaw	Cone		
d_e		sp	d_{im}						
inches	mm	B.W.G	mm	inches	Cod.	Inches mm	Cod.	Cod.	Cod.
1.1/4" (31,8)	10	24,5 ÷ 25,5	0.956 ÷ 1.004	T2PM-S25	30 1.181	T2PM-R25÷48	TPJ/30-5	TPC/34/200	
	11 ÷ 12	25,5 ÷ 26,5	1.004 ÷ 1.043	T2PM-S26					
	13	25,5 ÷ 26,5	1.043 ÷ 1.083	T2PM-S27					
	14 ÷ 15	27,5 ÷ 28,5	1.083 ÷ 1.112	T2PM-S28					
	16 ÷ 18	28,5 ÷ 29,5	1.112 ÷ 1.161	T2PM-S29					
	19 ÷ 22	29,5 ÷ 30,5	1.161 ÷ 1.201	T2PM-S30					
	23 ÷ 24	30,5 ÷ 31,5	1.201 ÷ 1.240	T2PM-S31					
1.1/2" (38,1)	10 ÷ 11	31,5 ÷ 32,5	1.240 ÷ 1.280	T2PM-S32	30 1.181	T2PM-R25÷48	TPJ/30-5	TPC/45/200	
	12 ÷ 13	32,5 ÷ 33,5	1.280 ÷ 1.319	T2PM-S33					
	14	33,5 ÷ 34,5	1.319 ÷ 1.358	T2PM-S34					
	15 ÷ 17	34,5 ÷ 35,5	1.358 ÷ 1.398	T2PM-S35					
	18 ÷ 20	35,5 ÷ 36,5	1.398 ÷ 1.437	T2PM-S36					
	21 ÷ 24	36,5 ÷ 37,5	1.437 ÷ 1.476	T2PM-S37					
1.3/4" (44,4)	10 ÷ 11	37,5 ÷ 38,5	1.476 ÷ 1.516	T2PM-S38	30 1.181	T2PM-R25÷48	TPJ/30-5	TPC/45/200	
	12	38,5 ÷ 39,5	1.516 ÷ 1.555	T2PM-S39					
	13 ÷ 14	39,5 ÷ 40,5	1.555 ÷ 1.594	T2PM-S40					
	15 ÷ 16	40,5 ÷ 41,5	1.594 ÷ 1.634	T2PM-S41					
2" (50,8)	10	43,5 ÷ 44,5	1.713 ÷ 1.752	T2PM-S44	30 1.181	T2PM-R25÷48	TPJ/30-5	TPC/56/200	
	11 ÷ 12	44,5 ÷ 45,5	1.752 ÷ 1.791	T2PM-S45					
	14 ÷ 15	46,5 ÷ 47,5	1.831 ÷ 1.870	T2PM-S47					
	16 ÷ 18	47,5 ÷ 48,5	1.870 ÷ 1.909	T2PM-S48					
2.1/2" (63,5)	9	55,5 ÷ 56,5	2.185 ÷ 2.224	T2PM-S56	30 1.181	T2PM-R25÷48	TPJ/30-5	TPC/80/200	
3" (76,2)	9 ÷ 10	68,5 ÷ 69,5	2.697 ÷ 2.736	T2PM-S59					



