



PBM-2500 ID Mount End Prep and Flange Facer (0.5" to 4" Pipe)

ADVANTAGES

- Light weight - 14 lbs
- Heavy tool bits held in by keyed slots
- Clamping mandrel with bolt-on locator pads (no springs); stops any pieces from dropping down into the work piece
- Gear drive unit has spiral bevel gears for better torque and more teeth engagement
- Mandrels cover a range of 0.5" to 4" ID
- Pneumatic and electric motors available
- Face both the raised face and bolt hole surface of a flange

APPLICATIONS

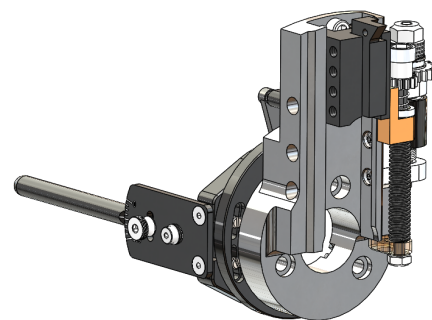
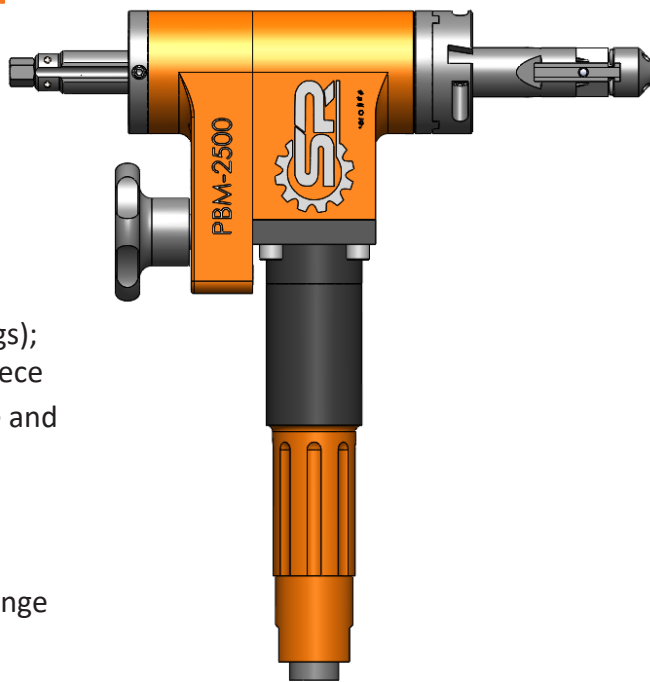
- Beveling Boiler Tubes
- Boiler Tube Repair
- Fabrication
- Pipe Lines
- Seal Weld Removal
- Internal & External Beveling
- Facing
- Counter-Boring
- Weld Removal

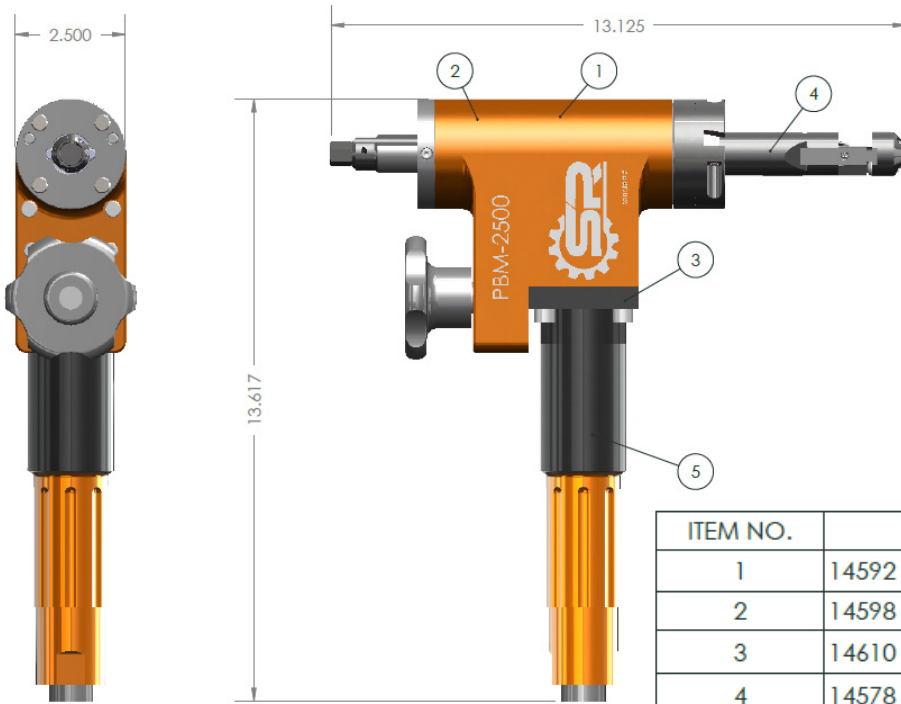
PRODUCT DESCRIPTION

The PBM-2500 is a right-angled pipe (tube) end-prep machining tool designed to face, bevel, and counterbore for cutting end-prep configurations for welding. These operations can be performed separately or simultaneously. The current model uses a pneumatic powered motor. An optional electric motor is available upon request.

This machine uses an internal expanding clamping mandrel with interchangeable pad sets, which will accommodate internal diameters from a 1.000" to 2.50" ID (standard mandrel). Optional mandrels are available and will mount from 0.5" to 1.25" ID (small mandrel) and 2.50" to 4.00" ID (large mandrel). Components, operation, and maintenance are covered in further detail in the operating manual.

The PBM-2500 beveling machine is capable of tube and pipe weld-end preparation that meets all existing conventional codes including the more stringent nuclear codes.

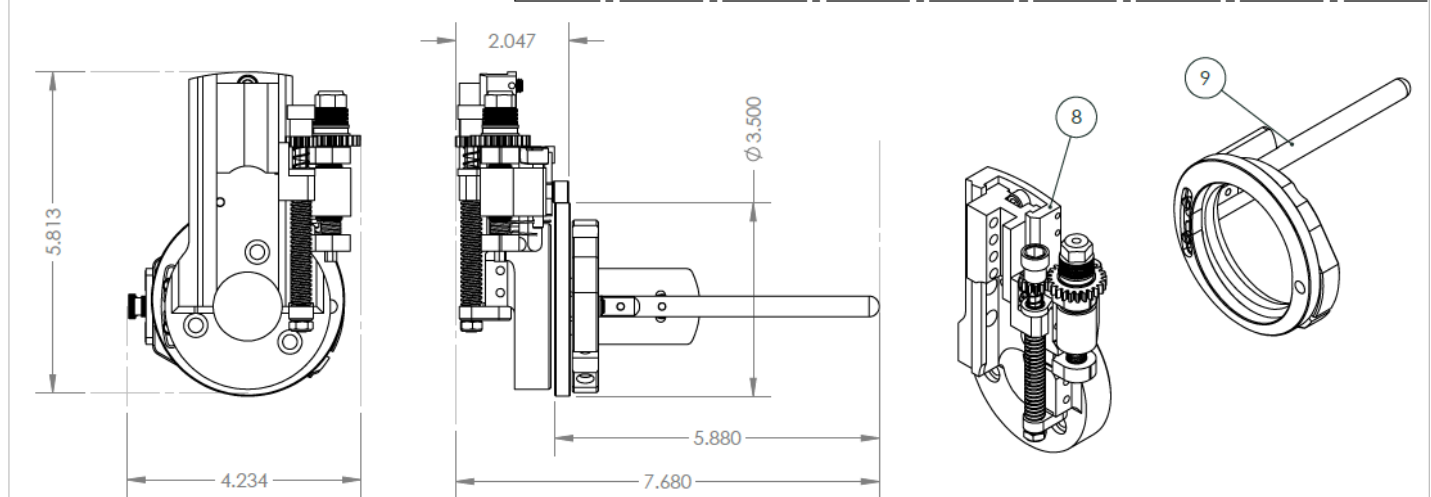
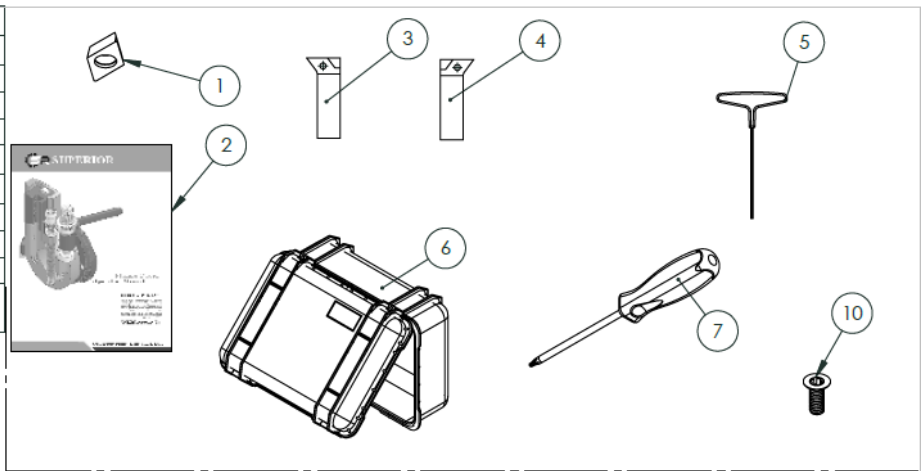




ITEM NO.	PART NUMBER	QTY.
1	14592 HOUSING MAIN ASSEMBLY	1
2	14598 FEED HOUSING ASSEMBLY	1
3	14610 ASSEMBLY PINION	1
4	14578 ASSY MANDREL	1

Machining Performance Range		2500
ID Mounting Range:	Small Mandrel (Optional)	0.500 in - 1.250 in (12.7 mm - 31.8mm)
	Standard Mandrel	1.000in - 2.500 in (25.4. mm – 63.5 mm)
	Large Mandrel (Optional)	2.500 in – 4.000 in (63.5mm – 101.6mm)
Cutting Range		0.500in - 4.000in (12.7 mm – 101.6 mm)
Radial Clearance		2.500in (63.5 mm) / Large Mandrel Option 4.000 in (101.6mm)
Max Wall Thickness		0.625 in
Optional Flange Facer		Yes
Drive System		
Motor		1.11 HP (827.73W)
Recommended Air Pressure		40 CFM @ 90PSI
Speed		290 rpm @ Max output
Electric Motor		Available Upon Request
Measurements		
Machine Weight		14 lbs (6.35kg)
Shipping Weight		29 lbs (13.15kg)
Dimensions		
Machine (LxWxH)		Refer to drawing
Crate/Shipping (LxWxH)		25in x 20in x 10in (635mm x 508mm x 254mm)

ITEM	PART NUMBER	QTY.
1	15392 INSERT TOOL BIT FLANGE FACER 2500	5
2	15388 MANUAL FLANGE FACER PBM-2500	1
3	14968 TOOL BIT HOLDER LOW RANGE	1
4	15386 TOOL BIT HOLDER HIGH RANGE	1
5	15711 KEY ALLEN T HANDLE 0.3125 IN	1
6	15389 PELICAN CASE	1
7	15387 DRIVER TORX #15	1
8	15385 ASSY MAIN BODY	1
9	13121 ASSY CAM 2.5IN ADJUSTABLE	1
10	15712 SCREW TORX #15 M4-.7 X 10 INSERT HOLDER	2



Machining Performance Range

ID Mounting Range:	Standard Mandrel	1.000 in - 2.500 in (25.40 mm – 63.50 mm)
	Large Mandrel	2.500 in – 4.000 in (63.50 mm – 101.60 mm)
Cutting Range		1.000 in - 8.500 in (25.40 mm – 215.90 mm)

Drive System

Motor	1.11 HP (827.73 W)
Recommended Air Pressure	40 CFM @ 90 PSI
Speed	540 rpm @ Max Output
Electric Motor	Available Upon Request

Measurements

Machine Weight	4 lbs (1.81 kg)
----------------	-----------------

Dimensions

Machine (LxWxH)	Refer to drawing
-----------------	------------------



SUPERIOR

One Company, *Superior* Results.

Beaumont, TX | Blackwood, NJ | Campbell River, BC | Corpus Christi, TX | Edmonton, AB
Gonzales, LA | Houston, TX | Rancho Dominguez, CA | Toronto, ON | Webster, TX



833.447.3777



info@sprtool.com



sprtool.com

Follow us on social media:

